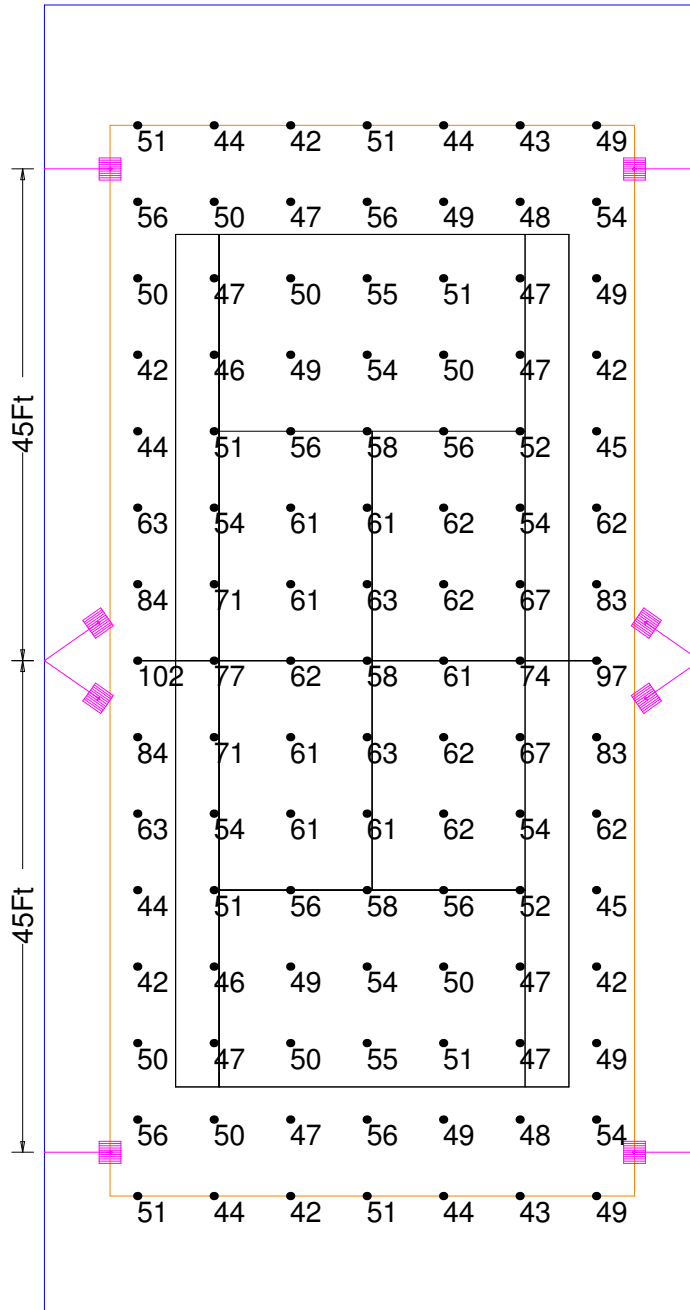


# PROFESSIONAL SERIES 6 POLE 8 LIGHT

Calculation Summary							
Label	CalcType	Units	Avg	Max	Min	Avg/Min	Max/Min
PPA	Illuminance	Fc	55.21	102	42	1.31	2.43
COURT	Illuminance	Fc	56.40	77.0	46.0	1.23	1.67

## SINGLE COURT 60X120



PROFESSIONAL SERIES 1000MH  
 25 FOOT MOUNTING  
 3' ARMS  
 READINGS AT 3' AG

### Luminaire Schedule

Symbol	Qty	Arrangement	Lumens	LLF	Description
	4	SINGLE	107800	1.000	Professional Series PRO-1-T4-1000MH-Single @ 25' mtg ht.
	2	2 @ 70 DEGREES	107800	1.000	Professional Series PRO-1-T4-1000MH-2@70° @ 25' mtg ht.

Lighting performance is calculated using Independent Test Lab testing data. The drawing above shows initial lumens only. All fixtures experience light loss over time. We use a light loss factor of 0.72 to calculate maintained lumens. Maintained lumens are what you will experience after the lights burn in and will be lower than the initial lumens shown above. If you would like to see a photometric drawing using maintained lumens please contact us at hartu@leetennis.com